

RAmiaoaudio

Spirit Broadcast

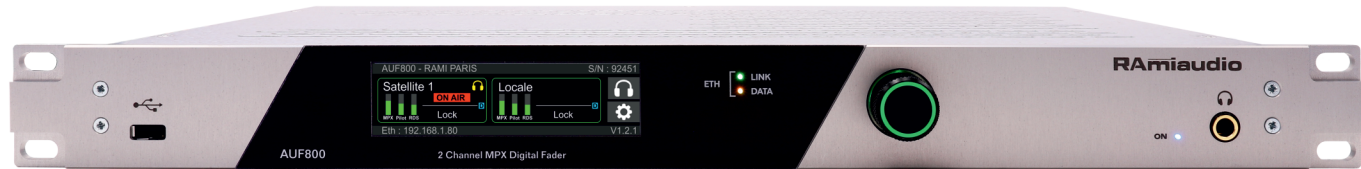
ON AIR



Digital MPX

AUF800

Digital MPX Autofader - 2 Inputs



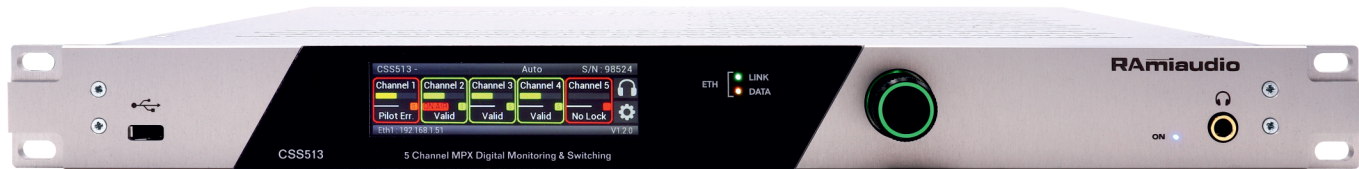
The AUF800 is a digital MPX autofader that crossfades two AES/EBU 192kHz MPX sources.

- All inputs have SRCs for internal synchronization.
- The default switched input is input A. Input B is activated either by the presence of audio modulation (L+R) in the frame, or by a GPI or IP command, or a combination of both.
- CSS core option monitoring input A for automate switching to input B if there is signal fault.
- Assignable GPOs are available for additional automation.
- An "analog input" option allows channels A and B to be replaced with an analog MPX input on a BNC connector.
- A 3'9" LCD display, combined with an incremental encoder, allows you to check input status, set monitoring output parameters, and change network settings.
- A built-in demodulator allows monitoring of the two MPX inputs and the MPX output on the front panel headphone output and balanced analog line output.
- The embedded web server and IP network connectivity allow remote programming, control, polling, and feedback via SNMP or ember+ protocol.



CSS513

Digital MPX Modulation Monitoring and Switching - 5 Inputs



The CSS513 is designed for continuous monitoring of five digital MPX sources. Wired as an insert in a digital broadcast chain, it will automatically switch to a lower priority backup digital MPX source in the event of a problem, and will automatically return to the priority source once the problems have been resolved. It can handle several types of error, divided into two groups.

- The first concerns the MPX content of the AES/EBU signal: the CSS513 can detect MPX global, pilot, RDS, L+R, L-R under- and over-modulation (programmable threshold).
- The second group concerns digital transmission: the CSS513 can control digital carrier presence, link quality and sampling frequency. The user validates or rejects the checks to be performed.

A monitoring section with a built-in demodulator, allows the user to check the inputs/outputs of the CSS513 at any time. A 24-bit 192kHz D/A converter provides a balanced analog output on Sub-D9 on the rear panel and a headphone output for signal monitoring.

Digital MPX

CNA113

MPX Digital/Analog Converter

The CNA113 is a digital-to-analog MPX converter that converts the AES192 digital MPX signal to an analog MPX signal. An internal FM tilt correction ensures that the 75kHz FM band excursion is maintained.

It features an AES/EBU 192kHz input on XLR and a THRU digital output for daisy-chaining multiple digital audio devices.

An OLED display on the front panel provides the following information:

- AES/EBU signal sampling frequency.
- Digital carrier detection.
- MPX signal level.



DEM113

Digital Stereo Demodulator

The DEM113 is a digital stereo demodulator. It extracts left and right analog signals from a digital MPX signal and provides two 48kHz AES/EBU outputs.

It features an AES/EBU 192kHz input on XLR and a THRU digital output for daisy-chaining multiple digital audio devices.

An OLED display on the front panel provides the following information:

- AES/EBU signal sampling frequency.
- Digital carrier detection.
- Pilot detection.
- Left and right signal levels.



EXT113

Digital MPX Distributor



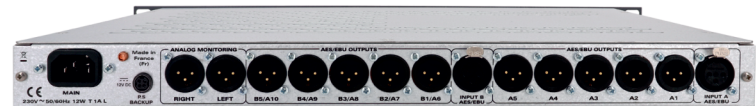
The EXT113 is a 2-in-1 device that integrates a dual AES/EBU 192kHz digital audio distributor and a digital stereo demodulator for monitoring the distributed signal.

Two configurations are possible:

- A (1 to 10): Digital input A is distributed to 10 outputs.
- A + B (2 to 5) : Digital input A is distributed to the first 5 outputs, and digital input B to the other 5 outputs.

For each channel :

- Automatic digital carrier and stereo pilot detection.
- Error detection.
- Balanced XLR and transformer (AES/EBU) input.



Digital MPX

EXT124-2

Digital Distribution Amplifier

The EXT124-2 is a distribution amplifier designed to distribute one digital audio signal to four outputs of the same type, or two digital signals to two outputs. It is completely transparent to the digital data being transmitted (user bits, status bits, synchronization, etc.) and accepts all standard, professional and semi-professional digital audio formats (AES/EBU, S/PDIF, IEC60958) with sampling frequencies from 32kHz to 192kHz.



REF124

Digital Normalizer Amplifier

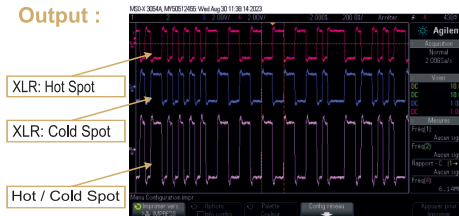
The REF124 is a digital normalization amplifier for transforming low level, degraded AES/EBU signals. Internal distribution allows a signal to be distributed to four outputs of the same type, or two digital signals to two outputs. Completely transparent to the transmitted digital data (user bits, status bits, synchronization, etc. ..), it accepts as input all standard, professional and semi-professional digital audio formats (AES/EBU, S/PDIF, IEC60958) with sampling frequencies from 32kHz to 192kHz.



Input :



Output :



Examples of reshaping a degraded 192KHz AES/EBU signal.





Digital Autofader / Silence Detector

AUF600

Ethernet AES/EBU Autofader - 3 Channels

The AUF600 is a digital audio mixer capable of mixing three sources in AES/EBU format.

- All inputs are equipped with SRC.
- The default switched input is input A; inputs B and C are switched by GPI, IP command, or a combination of both.
- GPO assignable.
- An analog input can be programmed to replace channel B or channel C.
- B+C output and B+C input allow sound processing to be added to these two channels.
- LCD Display
- Monitoring is selectable on all three inputs and the output.
- Integrated Web Server IP connection / SNMP protocol or Telnet protocol.
- CSScore option for silence detector and backup switching.



CSS404

Automatic Digital and Analog Audio Modulation Monitoring and Switching Device

The CSS404 is a device designed for permanent monitoring of a digital or analog stereo audio source. Wired as an insert in a broadcast chain, it automatically switches to a digital or analog backup source in the event of a problem, and automatically returns to the main source, according to the programmed parameters, once the problem has been solved.

SD option: Additional audio backup input via SD card.



12V



12V



POE



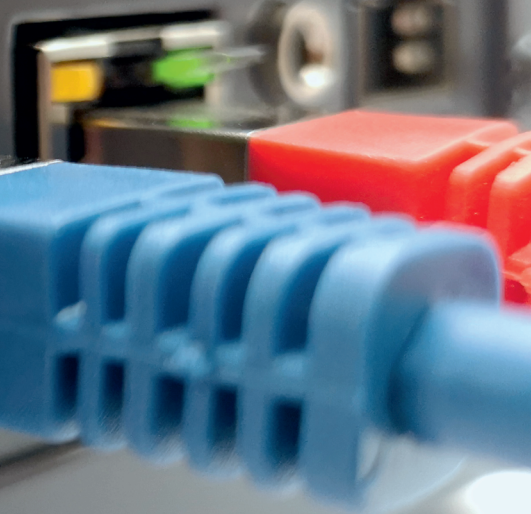
1G

Act/Link



1G

Act/Link



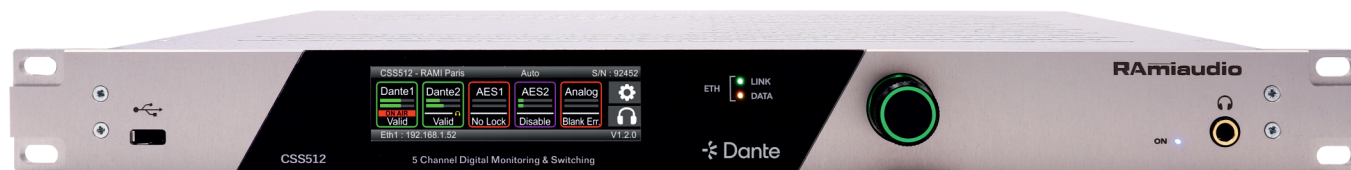
Made in
France

PRIMARY/POE



CSS512

Digital DANTE/AES67 Monitoring and Switching - 5 Inputs



The CSS512 is designed to permanently monitor five digital stereo audio signals. Connected as an insert in the digital path, should a problem occur, it allows switching to a spare digital signal, according to a decreasing priority scale, and to come back to the priority source as soon as the problem is cured.

The CSS512 is able to handle several error types, classified in two groups. The first one analyses the audio data with a detect silence and overshoot. The second group regards the digital quality: CSS512 monitors the digital carrier, the sampling frequency. The user defines the necessary checks.

- Multistandard switching:
 - 4x stereo DANTE/AES67 inputs/outputs.
 - 2x stereo AES/EBU inputs (SRC)/outputs on transformer.
 - 1x stereo analog balanced input/output (option).
- HTML5 emdedded web server.
- Supervision by SNMP (V2C and V2C Inform).
- Control with Ember+.
- Automatic AES/EBU bypass input/output in case of power fail. In By-Pass, the continuity of the program is ensured on both outputs by a double transformer.
- Assignable GPIO (5 GPI/ 8 GPO).

VCA808

Digital DANTE/AES67 Voltage Control Level

The VCA808 allows you to control audio level of a DANTE / AES67 signal, composed of eight audio stream with analog normal potentiometers.



- Control the sound level of a 7.1 immersive system using a simple potentiometer.
- Eight adjustable gain stages for remotely controlled of each channel using a normal potentiometer.
- Matrix assignment of control potentiometers
- OLED display allowing visualization all of input/output levels.
- Control port via screw terminal socket.

Accessories

FRT100 : Adapter module (270mm/1U) for flush mounting of a SLIMRACK.

FRT200 : 19" 1U rack adapter module for 2 SLIMRACK cases.

FRT300 : Plugging plate for FRT200.

Specifications

Net weight: 1.5 kg

Dimensions : 220x44x150 mm

PRT666D

DANTE Single Commentator Unit

The PRT666D is a single commentator unit with DANTE connectivity (Primary/Secondary). It integrates all the following elements:

- A high-definition digital microphone preamplifier with sensitivity adjustment.
- 12V or 48V phantom power.
- One independent stereo monitor output.
- ON/OFF switch for ON AIR with loop confirmation on opto Mos.
- External ON/AIR switching via GPI.
- Two switches for talkback 1 and 2 with talkback start loop confirmation on Mos opto.
- DANTE Primary and DANTE Secondary (backup) ports.

Communication is via an RJ45 network cable, carrying both audio information and power (PoE).



PRF75D

DANTE Headphone Amplifier

The PRF75D is much more than a headphone amplifier. With its DANTE connection, it can receive and convert 5 channels of digital audio.

- Main headphone output accessible via 6.35 jacks on front and rear panel.
- Independent balanced stereo monitor. This analog output can be used to power a pair of monitor speakers.
- Talkback input to headphone output, with automatic program detection and attenuation.
- Redundant DANTE connectivity Primary / Secondary or switcher.
- A backlit switch enables ON AIR remote control of the corresponding microphone channel on the console. It also activates a mute command on the monitor output, via ASM120D.





Broadcast Console

COMPACT3

Broadcast Console

This high-quality, French-made mixing console is the result of recognized experience in the professional radio world. All input modules include a VCA (Voltage Control Amplifier).

With a wide range of analog and digital inputs in a variety of formats, COMPACT 3 makes it easy to transition to digital radio while preserving current analog broadcasts.

- Five switchable balanced mic and line channels.
- Four AES/EBU digital channels, switchable to SPDIF or analog.
- Four USB IN inputs for automation broadcast.
- Dedicated USB output for recording from the Antenna or from Program 2.
- AES/EBU digital antenna output with analog dubbing.
- Program 2, Control Room, studio and headphone studio outputs.
- N-1 management of a hybrid external phone.
- USB output for Midi format Starts.

For audio level control, the Compact 3 is equipped with a peakmeter, as recommended by IEC 268-10/1. Display is via a 7" LCD screen.

Specifications

Net weight: 13 kg

Gross weight: 20 kg

Console: 600x450x90 mm

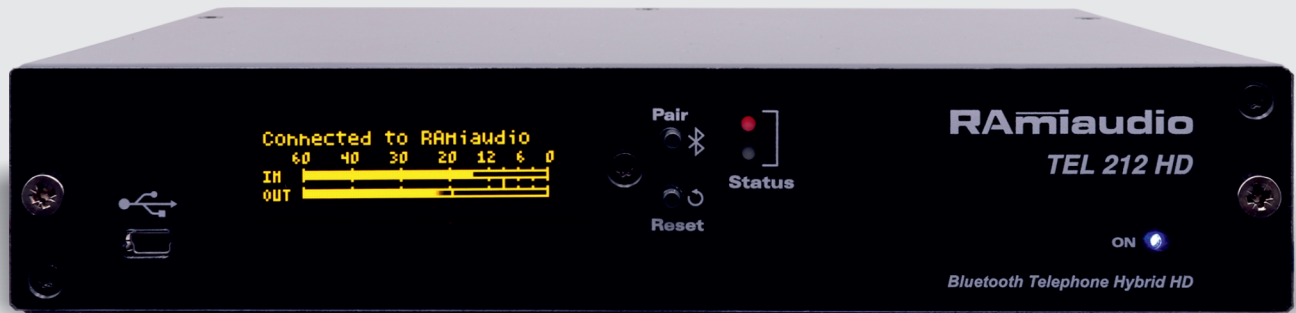
Flush-mounting: 570x440 mm

Power supply : 220x44x100 mm



Wireless in High Definition

Bluetooth connectivity



TEL212 HD

HD Bluetooth Telephone Hybrid

This device interfaces a mixer with a Bluetooth connection (GSM, PC...). It makes it possible to send music and microphone modulation to a correspondent and also to retransmit the latter's interventions on the digital or analog sound system. Equipped with a Bluetooth module of the latest generation, the TEL212 HD allows sound reproduction in HD quality.

- AES/EBU digital input on SRC.
- AES/EBU 48kHz/24bit digital output.
- Integrated Bluetooth profiles HFP1.7.2, HSP1.2, A2DP1.3, AVRCP1.6.
- iAP profile support for iOS device discovery.
- 10m Bluetooth range.
- Bluetooth 5.0, classe 2.
- Codec streaming audio SBC, AAC (HD).
- CVSD phone codec, mSBC (HD voice).
- Device renaming via software.



Rear panel

Accessories

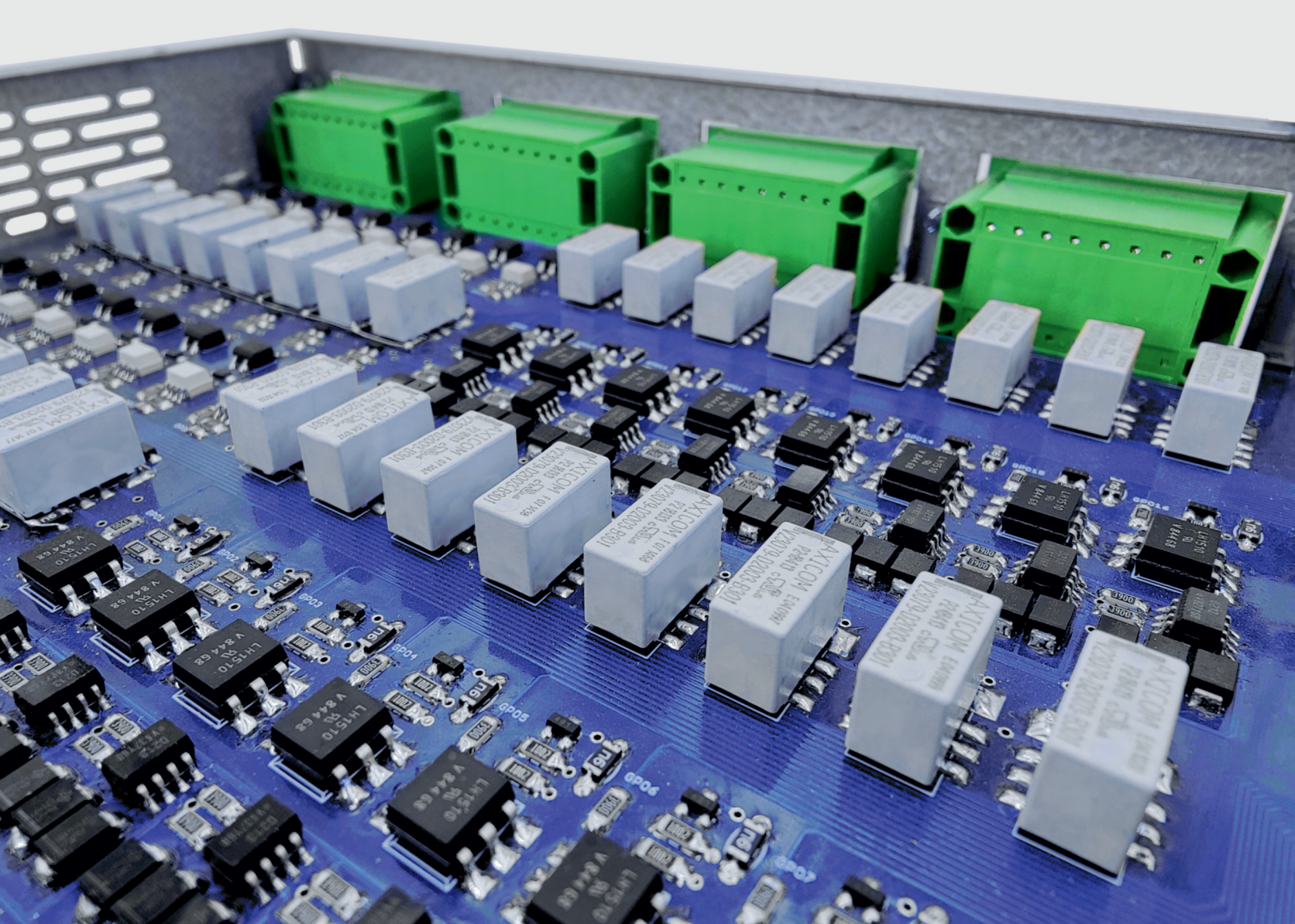
FRT100 : Adapter module (270mm/1U) for flush mounting of a SLIMRACK.

FRT200 : 19" 1U rack adapter module for 2 SLIMRACK cases.

FRT300 : Plugging plate for FRT200.

Specifications

Net weight: 1.5 kg Dimensions : 220x44x150 mm



Universal GPIO over IP Expander

EXP416

Universal GPIO Expander

The EXP416 combines control and monitoring of multiple digital or analog devices via Ember+ or SNMP protocol in a single device.

- Easy, direct connection to all existing equipment with parallel contacts.
- 16 digital inputs on Opto.
- 16 digital output on Opto Mos.
- 2 Ethernet 10/100 Base-T ports (Daisy chain).
- 1 USB Device 2.0.
- Individual configuration of GPI loop or voltage mode via embedded web server.
- Individual configuration of Pulse or Hold GPI mode.
- Individual configuration of GPO loop or voltage mode via embedded web server.
- Individual configuration of 24V/12V/5V GPO voltage via web server.
- Real-time visualization of the status of each input/output via the embedded web server.
- Dual power supply with automatic switching.
- Dual GPIO bias power supply with automatic switching.
- Backup and restore the configuration file of the device.







PCS404

RJ Link Distributor with Power Supply

The PCS404 is a 2-in-1 product designed specifically for our range of RJ Link equipment. It integrates both an audio distributor and an overload protected 24V/1.25A power supply.

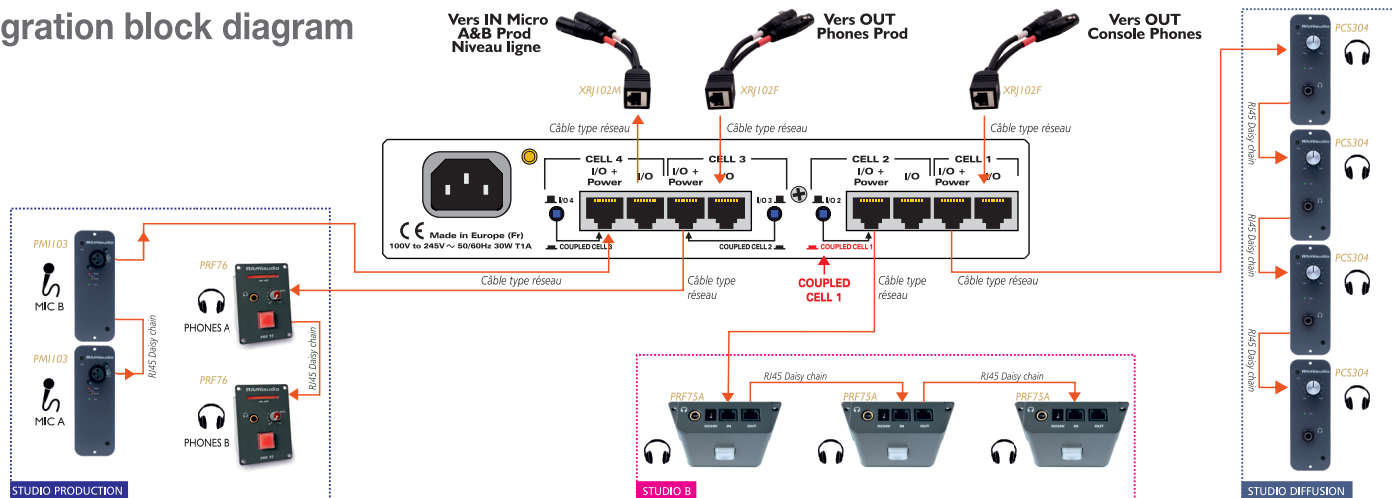
The PCS404 can power up to 15 PCS304, PMI103, PRF75A or PRF76 units.

It includes four identical cells in a slimrack housing, each consisting of two RJ45.

- RJ45 "I/O": Balanced stereo audio input/output signal (e.g. microphone input, console output)
- RJ45 "I/O + power": Audio input/output with 24V supply for downstream equipment.



Integration block diagram





PRF76

Built-in Headphone Amplifier with GPIO

The PRF76 integrates a high quality and power headphones amplifier, a “On AIR” light and illuminated push button in a same housing.

It features a balanced left and right input, as well as an order input with automatic program attenuation. Audio and power are supplied via an international standard RJ45 cable. Additional PRF76 modules can be added via RJ45 cable.



PRF75A

Under-desk Headphone Amplifier

The PRF75A is one of the most discreet headphone amplifiers on the market. It can be integrated under studio furniture, eliminating the need for stage cut-outs.

It features a balanced left and right input, as well as an order input with automatic program attenuation. Audio and power are supplied via an international standard RJ45 cable. Additional PRF75A modules can be added via RJ45 cable.

A headphone output is available on the front panel, as well as on the rear panel for remote control. An easily accessible MUTE switch on the underside of the module automatically mutes the audio.





PCS304

Built-in Headphone Amplifier

With the quality and power of its audio amplifier, the PCS304 is a worthy successor to the PCS300.

It has a balanced left and right input on RJ45 with THRU output. Audio and power are supplied via international standard RJ45 cable.

The daisy-chain topology allows up to three PCS304s to be distributed via a single power supply.

Headphone output is available on the front panel and on the rear panel for offset use.

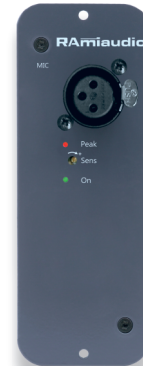


PMI103

Analog RJ45 microphone preamplifier

The PMI103 is a built-in preamplifier for professional microphones with high dynamic range. It incorporates very low noise" quality components for perfect sound reproduction.

- Its transistor input stage gives it an input noise level of 128dB A-weighted.
- Audio and power are supplied via an international standard RJ45 cable.
- A line-level AUX output is available on a balanced 6.35 jack on the rear panel.
- A "PEAK" LED indicates saturation.
- Front panel microphone sensitivity adjustment.
- Integrated phantom power for use with static microphones.



Lighting to Indicate

RGL series



Lighting to Indicate

RGL500/800

ON AIR Display Panels

The RGL500 and RGL800 are "ON AIR" LED display panels.

Powered by the ASM120D interface or the PCS320 power supply. In the latter case, control is via a loop applied directly to the panel.

Specifications : RGL500 : 210 x 105 x 35 mm
RGL800 : 400 x 150 x 30 mm

RGL300

Illuminated Indicator Column

The RGL300 is designed to be used in a radio environment to indicate which microphones are on-air, off-air, telephone reception, or other visualizations.

The RGL300 is available with two, three, four or five light plates. Depending on the lighting mood, a switch allows for two types of lighting brightness, either visible or discreet in a subdued atmosphere.

Connectivity is facilitated by the use of RJ45 cables to be connected to the ASM100 interface.

The RGL300 can be mounted directly on a table or on a wall using a bracket.

RGL100

Light Ring for Microphone Arm

The RGL100 is an LED indicator light designed to show which microphones are on the air in a radio environment. It is easily integrated between a microphone clamp and a microphone stand.





Accessories

Accessories

USB120

AES/EBU Dongle

The USB120 is an external dongle-type sound card that allows you to take the digital audio signal from your PC and convert it directly to an AES/EBU signal. It's compatible with all current operating systems and requires no special drivers.

In addition, the transformer-supplied AES/EBU output allows you to galvanically isolate the PC world from the audio equipment.

- USB type C connectivity.
- USB self-powered.
- AES/EBU transformer output on XLR.
- No specific driver required.
- Output format: 16 bits, 44.1 kHz / 48 kHz.
- Supports Windows, Mac and Linux.
- Lockable USB type C optional.



XRJ102M / XRJ102F

RJ45 Audio Adapter

XRJ102M - RJ45 Female to two "XLR Male" adapter cable.

XRJ102F - RJ45 Female to two "XLR Female" adapter cable.

Designed for use with the international standard, these adapters provide excellent signal transmission and long-term reliability. Each adapter is 20 cm long.



RAMIAudio

AUDIO PROFESSIONNEL

7 Rue Raoul Follereau
77600 BUSSY SAINT-GEORGES
FRANCE

Tél : +33 (0) 1 64 66 20 20

rami@ramiaudio.com
www.ramiaudio.com

